



Getting Started Graph

Using the graphical interface in AKS² to find related articles

This example illustrates how you can search and explore related articles with an easy-to-use graphical interface.

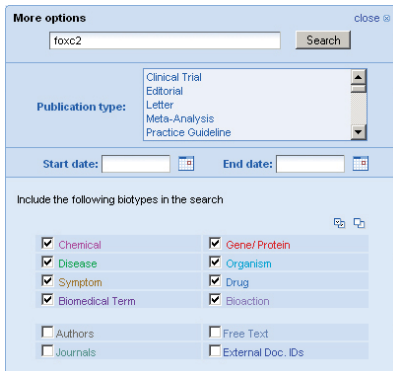
1 After you have logged in and perform an initial search, you can begin another search by using the query box at top of a summary page.



2 Type foxc2 in the field box and click the Search button.



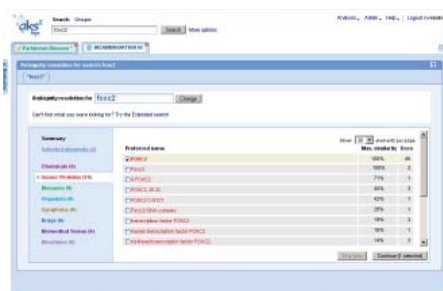
Note: If you want to perform a more complex query, click on the More options link, and a new window will appear.



In this window, you can specify entity type, article type, dates, journal or free text search

After clicking the search button, a new tab will appear. A list of entities will appear if there are multiple entities similar to your query term.

3 In this example, select FOXC2, and click Continue (1 selected)



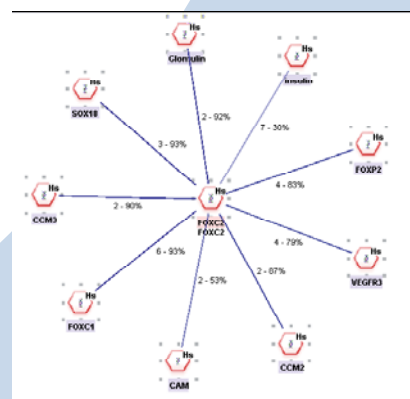
4 The Summary window appears, and you can select View all in the Genes/Protein panel.

Name	Relevance
FOXC1	93%
SOX18	93%
Glomulin	92%
CCM3	90%
CCM2	87%
FOXP2	83%
VEGFR3	79%
CAM	53%
insulin	30%

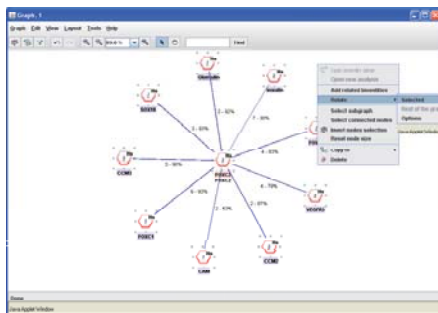
5 Select all of the proteins. Next, click on the graph icon in the upper right corner of the Element profile window. Click on the button and move the mouse over the desired graph name (e.g., New).



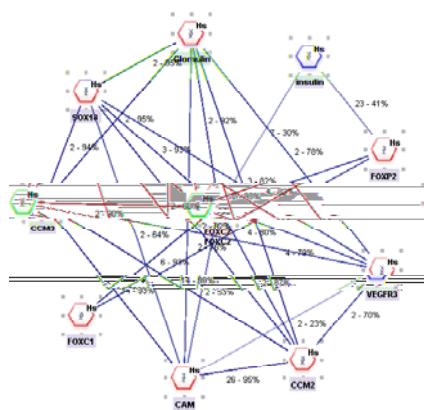
6 A window will appear showing a graphical representation of the abstracts related to FOXC2.



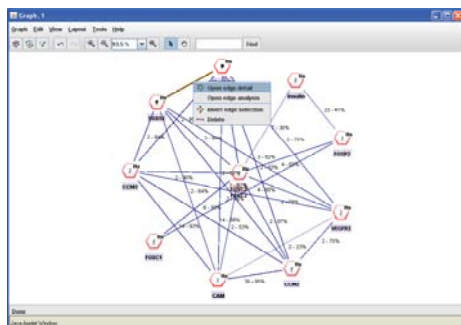
7 If you want to visualize how all of these bioentities related to each other, perform a right-click action with the mouse and select **Relate -> Selected**.



The graph is updated with lines (edges) between related bioentities (nodes).



8 To view a relationship, click on the edge, right-click to display the selection menu, and select **Open edge detail** to view the common abstracts.



A new window appears, and you will see where the two words are described in an abstract



9 If you want to see if any diseases are mentioned in the abstracts, select the **Disease** term. The window will refresh with disease words highlighted in green

